



Thermography Inspection Report

Company	DeLorenzo Electric Inc.
Author	J C
Date	11th October 2011

General Comments

This is a sample report. Descriptions and the scope of this report would be found here.

Contents

Description	Page No.
Inspection 1 - Fall 2011 PPL-1	3
Summary	4

Inspection 1 - Fall 2011 PPL-1

Operator	J C
Location	Mech. Room
Equipment	Power Panel #1

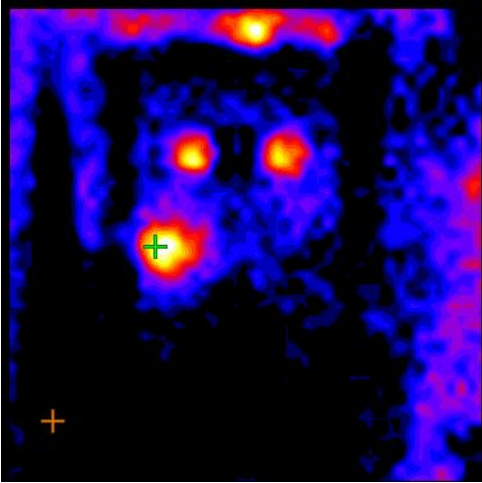
Snapshot

Date	11th October 2011
Time	11.55AM

Comment

Greatest temperature rise is 4.9 degrees F

Thermal Snapshot



Thermal and Visible Blend



Visible Image



Temperature Measurements

Cursor 1	70.4 °F
Cursor 2	65.5 °F
Difference	4.9 °F (Cursor 1 - 2)

Measurement Parameters

Emissivity:	0.95
Reflected Temp:	72.0 °F
Measured Load	sample
Rated Load	sample
Load %	Average

Repair Action

Action	Date	Initials
Inspected	11th Oct 11	JC
Repaired		
Reinspected		

Repair Priority
1 Low to 5 High

--

Fault / Recommended Action

No Faults found.

Summary

Insp. No.	Location	Equipment	Fault / Action	Priority
1	Mech. Room	Power Panel #1	No Faults found.	